



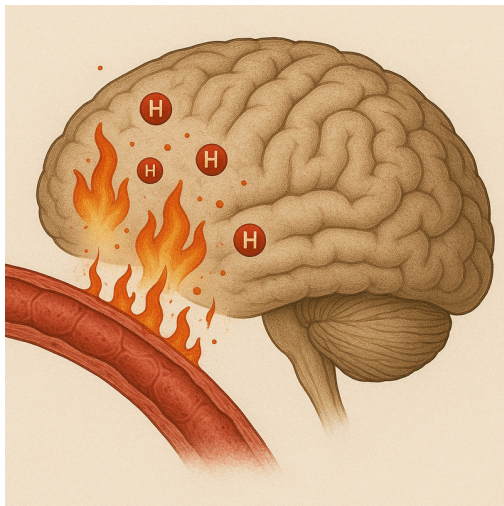
Bipolar Disorder as Persuader Emergency System Activation - A Neuroanatomical Framework

Introduction: Reframing Bipolar Through Emergency Compensation Failure

Bipolar disorder represents not a primary Native Brilliance system but an emergency compensation pattern that emerges when the angular/supramarginal gyrus fails to maintain cross-modal integration. This paper establishes how Layer IV dysfunction at 10-15 Hz forces three neural systems into unstable coupling, traces how histamine attempts chemical override of failed electrical integration, and demonstrates how this creates the characteristic cycling between synthetic coherence (mania) and system collapse (depression).

Section 1: The Persuader - An Emergency System Definition

Not a Primary System but Compensatory Pattern



Unlike the six Native Brilliance systems that represent normal neural functions, the Persuader emerges only when:

- Primary failure: Angular/supramarginal gyrus Layer IV cannot maintain 10-15 Hz integration
- Multiple system compensation: Three incompatible systems attempt simultaneous control
- Chemical override: Histamine flooding forces coupling across frequency barriers
- Narrative generation: Brain creates stories to reconcile incompatible signals

The Three Systems Forced into Coupling

When cross-modal integration fails, three systems attempt compensation:

1. Visionary System (Occipital-Frontal, 25-40 Hz gamma):

- Primary/secondary visual cortex generating predictions
- Dorsolateral prefrontal cortex simulating futures
- Layer II/III pyramidal neurons via parvalbumin interneurons
- Creates grandiose projections unconstrained by reality

2. Pioneer System (VTA-Motor, 4-8 Hz theta):

- Ventral tegmental area signaling novelty/reward
- Primary motor cortex Layer V initiating movement
- Ventral striatum driving motivation
- Generates exploratory hyperactivity and risk-taking

3. Accountant System (Hypothalamic-Thalamic, 2-4 Hz delta):

- Hypothalamus managing metabolism
- Layer VI corticothalamic backward projection
- Thalamic reticular nucleus (71% parvalbumin neuron loss in bipolar)
- Attempts resource management but becomes exhausted

Section 2: The Primary Integration Failure

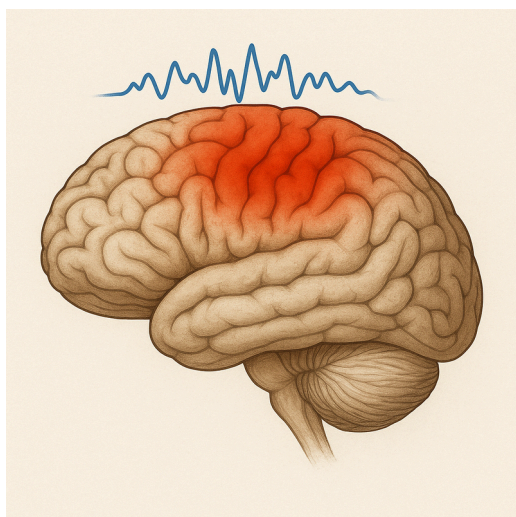
Angular/Supramarginal Gyrus Dysfunction

The angular (BA 39) and supramarginal (BA 40) gyri normally:

- Receive converging inputs from multiple sensory modalities
- Layer IV maintains 10-15 Hz oscillations for cross-modal binding
- Create unified percepts from distributed processing
- Enable coherent self-narrative and reality testing

In Bipolar, Layer IV Shows:

- 71% reduction in theta-gamma phase-amplitude coupling
- Cannot coordinate slow (theta) and fast (gamma) rhythms
- Loss of cross-frequency coupling between brain regions
- Different cortical areas become temporally disconnected



Persistent Alpha Suppression

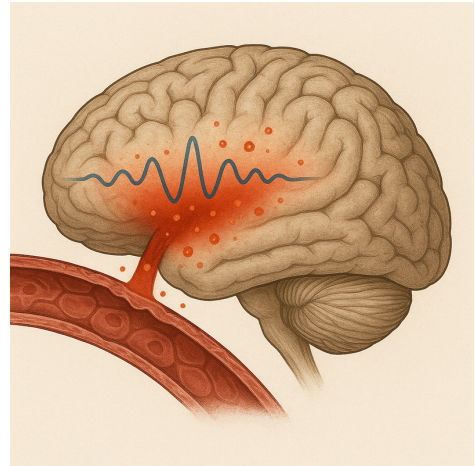
The research shows alpha suppression persists across all mood states:

- Alpha (8-12 Hz) normally provides "idle" state between processing
- Includes portions of Guardian (6-10 Hz) and Integrator (10-15 Hz) ranges
- Persistent suppression means:
 - No rest state between active processing
 - Cannot reset or clear working memory
 - Constant activation without integration

Blood-Brain Barrier Breakdown

Matrix metalloproteinase activation (MMP-2, MMP-9):

- Degrades tight junction proteins
- Allows peripheral inflammation CNS access
- Breaks down barriers between normally separated systems
- Enables inappropriate cross-system coupling



Section 3: Histamine - The Chemical Override Mechanism

H2 Receptor Control of VTA Dopamine

The research reveals critical histamine mechanisms:

- 60% of VTA dopamine neurons express H2 receptors
- H2 receptors normally increase GABAA presence (inhibitory control)
- H2 receptor deletion induces manic behaviors
- Both lithium and valproate reverse these behaviors

The Override Mechanism:

- When electrical integration fails, histamine attempts chemical coupling
- Forces dopaminergic systems to fire despite frequency incompatibility
- Creates artificial synchrony through neurochemical rather than oscillatory means

Histaminylation - Direct Gene Modification

Newly discovered mechanism (2025):

- Histamine directly modifies histones
- Regulates gene expression independent of neurotransmission
- Can force expression patterns across incompatible systems
- Creates temporary synthetic coherence

Mast Cell Contribution

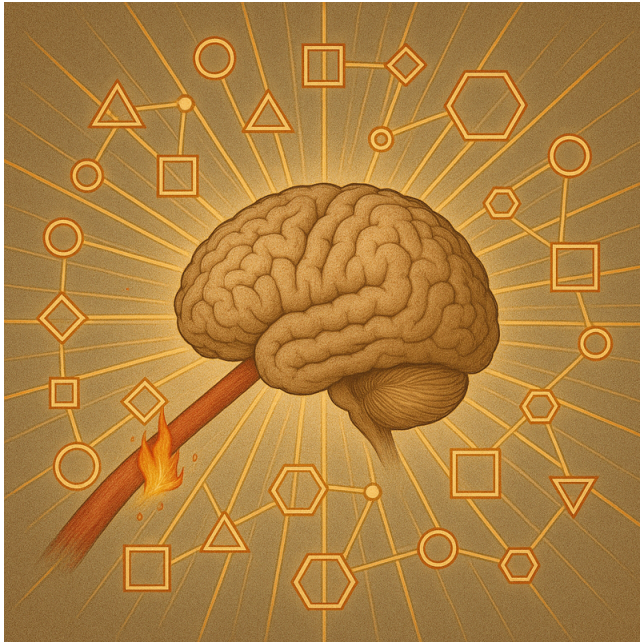
Brain mast cells provide >50% of brain histamine:

- Triggered by stress, inflammation, oxidative stress
- Creates positive feedback loop with BBB permeability
- Allows sustained histamine flooding
- Maintains emergency coupling despite metabolic cost

Section 4: The Cycling Pattern - Mania to Depression

Manic Phase - Synthetic Coherence

When histamine successfully forces coupling:



Neurophysiology:

- Excessive beta (13-30 Hz) and gamma (>30 Hz) in bilateral prefrontal
- All three systems temporarily achieve synthetic synchrony
- Hyperconnected default mode network
- Dopaminergic overdrive from failed H2 inhibition

Phenomenology:

- Visionary: Grandiose future projections
- Pioneer: Hyperactivity and exploration
- Accountant: Feeling of infinite resources
- Persuader narrative: "Everything is possible and connected"

Why It Feels Coherent:

- Histamine forces temporary phase-locking
- Brain generates narratives to explain internal state
- Synthetic coherence feels like profound insight
- Cannot detect the artificial nature of coupling

Depressive Phase - System Collapse

When compensation exhausts:

Neurophysiology:

- Theta dominance (4-8 Hz) in right hemisphere
- Visionary system offline (no gamma)
- Pioneer system depleted (dopamine exhausted)
- Accountant in crisis (metabolic failure)
- Default mode network hypoconnectivity

Phenomenology:

- No future modeling (Visionary failed)
- No motivation (Pioneer depleted)
- No energy (Accountant exhausted)
- Persuader narrative: "Nothing matters or works"



Mixed States - Desynchronized Systems

Systems cycling independently:

- Visionary manic while Pioneer depressed
- Creates agitated depression (ideas without energy)
- Or dysphoric mania (energy without coherence)
- Most dangerous state (energy + hopelessness)

The Kindling Effect

Each cycle makes the next easier:

- Histamine receptors sensitize
- BBB becomes progressively leaky
- Parvalbumin neurons progressively lost (71% reduction)
- Eventually rapid cycling or chronic mixed states

Section 5: Biomarkers and Validation

Established Markers of Emergency Compensation

Cross-Frequency Coupling:

- 71% reduction in theta-gamma coupling
- 83% accuracy distinguishing bipolar from unipolar
- Phase-locking values disrupted across networks
- Modulation indices reveal coupling strength failure

Histamine System:

- H3 receptor binding increased in prefrontal cortex
- Reduced hippocampal H3 expression

- Disrupted circadian histidine decarboxylase
- Mast cell tryptase elevation

Three-System Markers:

- Visionary: Excessive prefrontal gamma in mania
- Pioneer: VTA dopamine receptor changes
- Accountant: 71% TRN parvalbumin neuron loss

Inflammatory Cascade:

- MMP-2 and MMP-9 elevation
- C3a and C5a complement activation
- TGF- β 1 deficiency
- Persistent cytokine elevation (IL-6, IL-17, TNF- α)

EEG Signatures of Emergency Coupling

Mania:

- Bilateral prefrontal beta-2 and beta-3 excess
- Enhanced gamma coherence
- Reduced gamma-theta coupling precision
- Hyperactive subcortical, hypoactive cortical

Depression:

- Right hemisphere theta dominance
- Reduced theta response to cognitive tasks
- Persistent alpha suppression
- Decreased network efficiency metrics

Section 6: Why the Persuader Creates Narratives

The Reconciliation Imperative

With three incompatible systems generating different predictions:

Conflicting Signals:

- Visionary: "The future is magnificent/catastrophic"
- Pioneer: "Everything needs exploration/nothing responds"
- Accountant: "Resources are infinite/depleted"

Narrative Generation:

- Brain must create coherent self-story
- Persuader narratives reconcile incompatible signals
- Stories shift with dominant system
- Creates characteristic "insight" of mania

The Charismatic Quality

The persuasive ability emerges from:

- Multiple simultaneous perspectives (three systems)
- Emotional intensity from histamine flooding
- Narrative flexibility from unstable coupling
- Conviction from synthetic coherence

This explains why many with bipolar are:

- Highly creative (multiple perspective access)
- Charismatic leaders (persuasive narratives)
- Artists/writers (translate internal chaos to meaning)
- But struggle with stability

Section 7: Scientific Validation Framework

Testable Predictions

This emergency system framework makes specific, falsifiable predictions:

Primary Integration Failure:

1. Angular/supramarginal Layer IV will show specific 10-15 Hz disruption preceding mood episodes
2. Cross-frequency coupling deficits should correlate with episode severity
3. Restoring 10-15 Hz oscillations should prevent emergency system activation
4. Layer IV thickness/connectivity should predict bipolar vulnerability

Three-System Coupling Hypothesis:

1. Simultaneous recording from occipital-frontal (Visionary), VTA-motor (Pioneer), and hypothalamic regions (Accountant) should show:
 - Independent oscillations in euthymia
 - Forced coupling during mania
 - Sequential failure during depression
2. Coupling strength should predict mood state transitions
3. Preventing coupling should prevent mania

Histamine Override Mechanism:

1. H2 receptor antagonists should prevent manic episodes
2. Histamine levels should spike before mood transitions
3. Histaminylation patterns should differ between mood states
4. Mast cell stabilizers should reduce cycling frequency

Critical Experiments

Experiment 1: Layer IV Stimulation

- Hypothesis: Targeted 10-15 Hz stimulation of angular/supramarginal gyrus prevents episodes
- Method: Transcranial alternating current stimulation (tACS) at individual alpha-beta frequency
- Prediction: Improved cross-frequency coupling, reduced episode frequency
- Control: Sham stimulation or different frequency

Experiment 2: Multi-System Recording

- Hypothesis: Three systems show progressive coupling before mania
- Method: Simultaneous EEG/MEG from Visionary, Pioneer, Accountant regions
- Prediction: Coupling precedes clinical symptoms by 24-48 hours
- Validation: Coupling metrics predict mood rating scales

Experiment 3: Histamine Manipulation

- Hypothesis: Histamine drives emergency coupling
- Method: H3 inverse agonist during euthymia vs placebo
- Prediction: Increased histamine triggers coupling and symptoms
- Safety: Include mood monitoring and rescue protocol

Experiment 4: Longitudinal Biomarker Tracking

- Hypothesis: Progressive biomarker changes predict system failure cascade
- Method: Weekly sampling of:
 - Cross-frequency coupling (EEG)
 - Histamine/tryptase (blood)
 - Cortisol (hair/saliva)
 - MMP-2/9 (serum)
- Prediction: Specific sequence predicts episode type and timing

Falsification Criteria

The framework would be falsified if:

1. Bipolar episodes occur without angular/supramarginal disruption
2. Three systems don't show coupling during mania
3. Histamine manipulation doesn't affect mood states
4. Cross-frequency coupling restoration doesn't reduce episodes
5. Biomarker sequences don't predict episodes

Research Priorities

Immediate priorities:

1. Validate Layer IV disruption as primary event
2. Confirm three-system coupling pattern
3. Establish histamine's causal role
4. Develop predictive biomarker panels

Longitudinal studies needed:

1. Track progression from integration failure to first episode
2. Monitor coupling dynamics across multiple cycles
3. Identify critical intervention windows
4. Map individual variation in compensation patterns

Technology development:

1. Real-time cross-frequency coupling monitoring
2. Closed-loop stimulation based on coupling metrics
3. Wearable devices tracking early warning signs
4. Personalized frequency targets for intervention

Conclusion: The Persuader as Emergency Architecture - A Testable Framework

The Persuader/Escape Artist represents not a primary neural system but the brain's emergency response to integration failure. When the angular/supramarginal gyrus cannot maintain cross-modal binding at 10-15 Hz, three incompatible systems - Visionary (gamma), Pioneer (theta), and Accountant (delta) - are forced into unstable coupling through histamine-mediated chemical override.

This framework generates specific, testable predictions:

1. Integration failure in Layer IV precedes and predicts episodes
2. Three-system coupling can be measured and potentially prevented
3. Histamine flooding provides a druggable target for intervention
4. Biomarker sequences should predict episode timing and type
5. Targeted stimulation at 10-15 Hz might prevent emergency activation

The Persuader's characteristic abilities - charisma, creativity, persuasion - emerge from accessing multiple incompatible perspectives simultaneously and generating narratives to reconcile them. This is both gift and curse: access to extraordinary creative states but at the cost of stability.

If validated through the proposed experiments, this framework would transform bipolar treatment from symptom suppression to prevention - identifying integration failure before emergency compensation, supporting vulnerable systems before collapse, and potentially preventing the need for the Persuader's desperate narrative reconciliation. The experimental validation priorities focus on establishing causality rather than correlation, with clear falsification criteria that could definitively support or refute this emergency system hypothesis.

The motto of the Persuader might be: "Making sense of chaos through story." Understanding this as an emergency response rather than primary pathology offers hope for preventing the chaos before stories become necessary - catching the system before it falls into the exhausting cycle of synthetic coherence and collapse that characterizes bipolar disorder.

